

A detailed technical line drawing of a car chassis, viewed from the top. The drawing shows the front and rear suspension systems, including control arms, springs, and shock absorbers. The front suspension features a double wishbone design, while the rear suspension is a multi-link setup. The central chassis rails and various mounting points are clearly depicted. The text 'BMR' is overlaid on the left side of the drawing, and a large, stylized 'K' logo is positioned in the center, partially overlapping the chassis rails.

BMR **K**



Golden Nut x 2



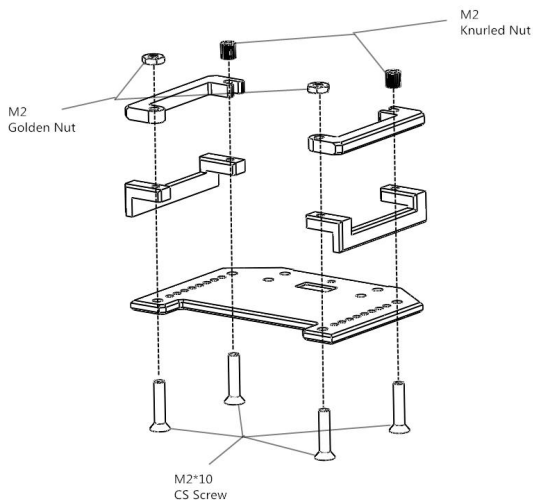
M2 Knurled Nut x 2



M2*4 CS Screw x 6

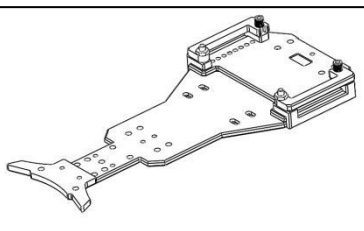
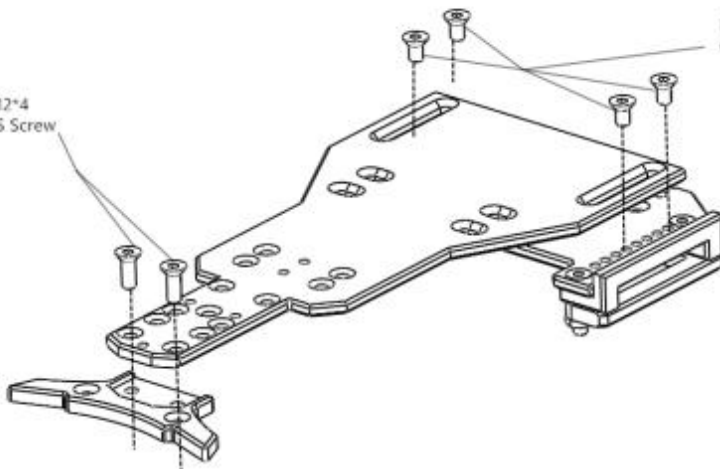


M2*10 CS Screw x 4



M2*4 CS Screw

M2*4 CS Screw





M2*8 Set Screw x 2



1.5*2.5*0.3 Shims x 4



M2*4 CS Screw x 4



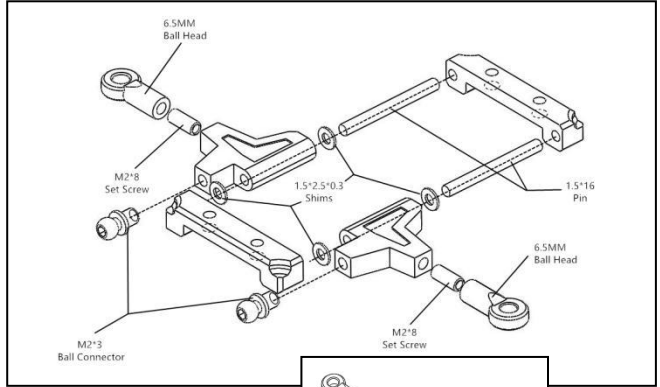
M2*3 Ball Connector x 2



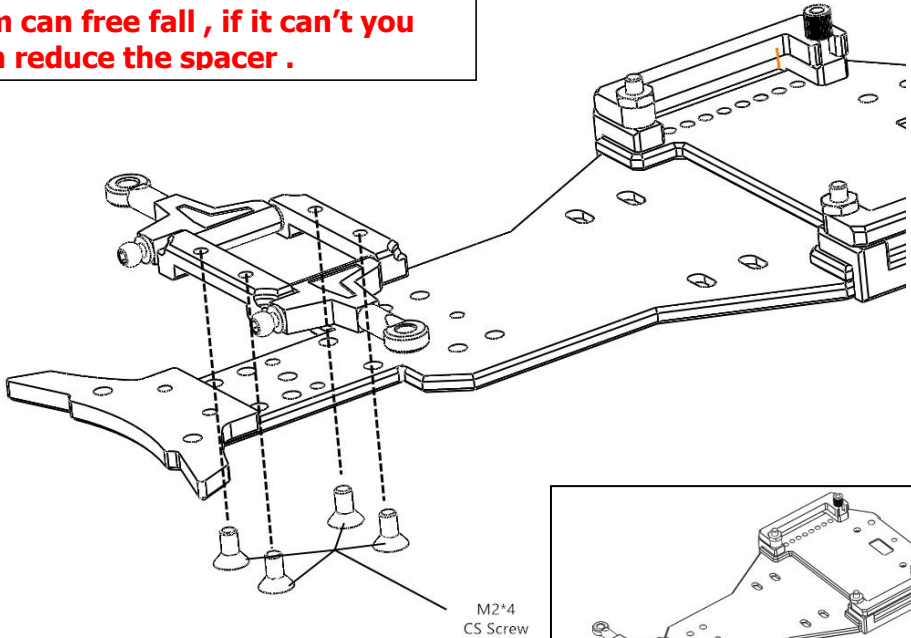
6.5MM Ball Head x 2



1.5*16 Pin x 2



When you finished this step please make sure the front lower arm can free fall , if it can't you can reduce the spacer .



M2*4
CS Screw



M2*8 Set Screw x 2



1.5*2.5*0.3 Shims x 8



M2*4 CS Screw x 2



M2*5 RH Screw x 2



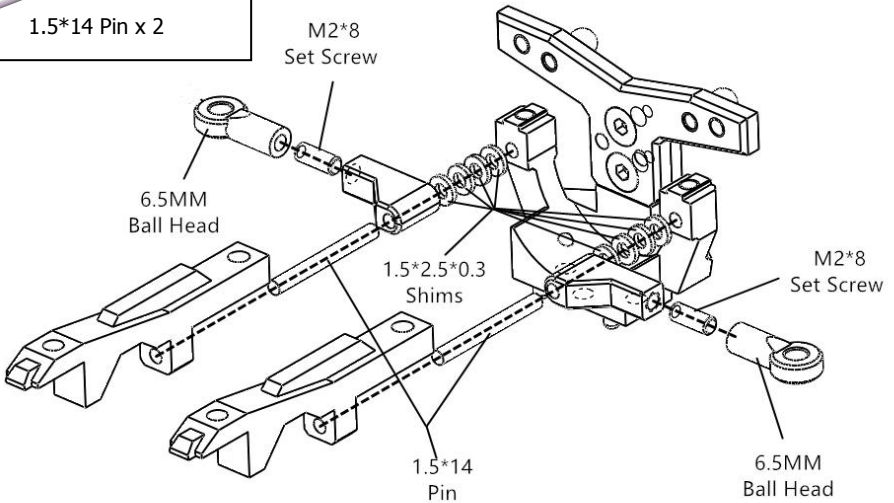
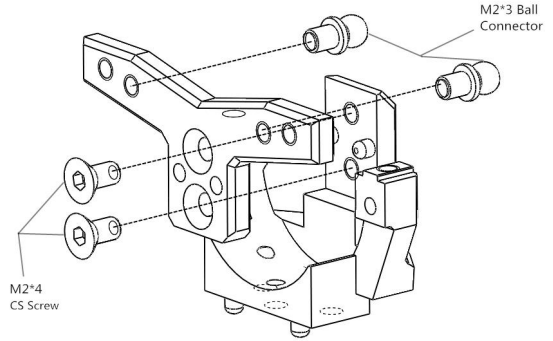
M2*3 Ball Connector x 2



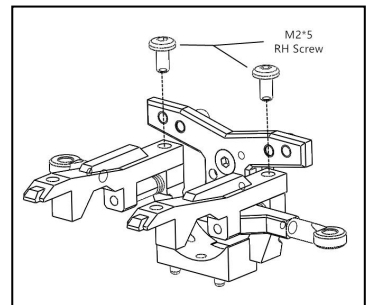
6.5MM Ball Head x 2



1.5*14 Pin x 2



When you finished this step please make sure the front upper arm can free fall , if it can't you can reduce the spacer .





Copper Sleeve x 4



2.5*3.5*0.2 Shims x 4



M2*5 RH Screw x 3



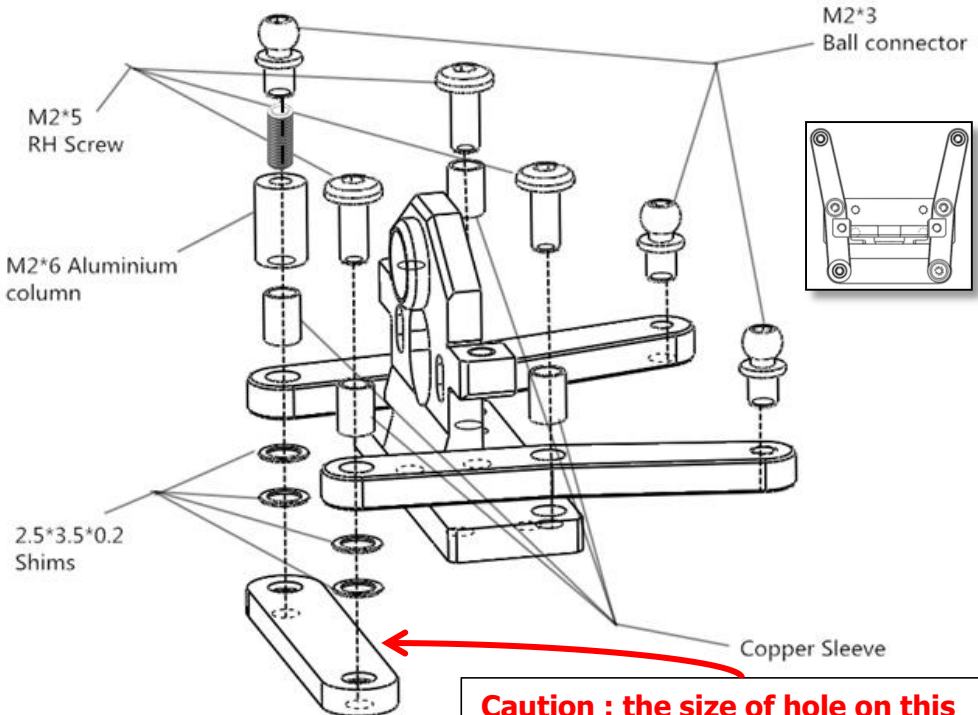
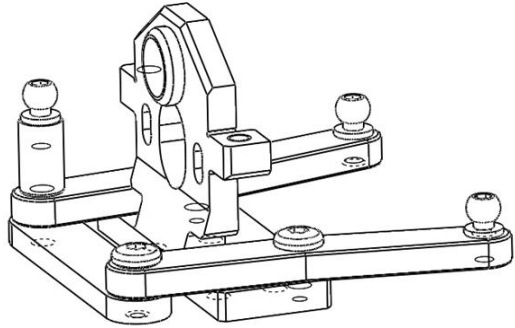
M2*6 Aluminium Column x1



M2*3 Ball Connector x 3

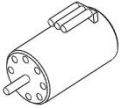


M2*8 Set Screw x 1

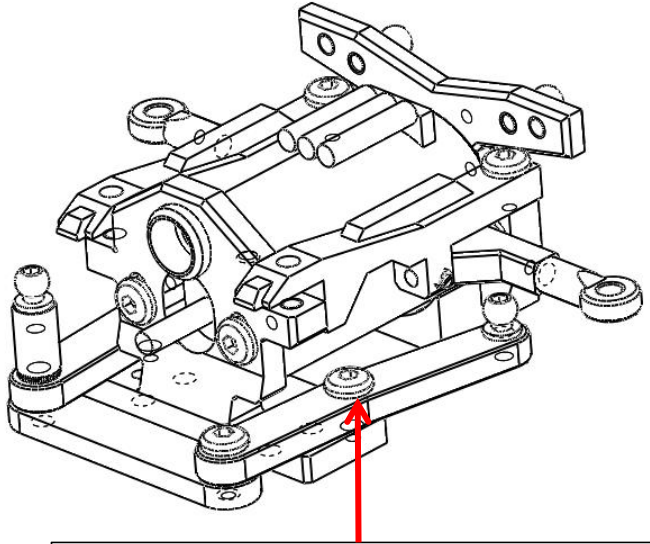




M2*4 RH Screw x 2

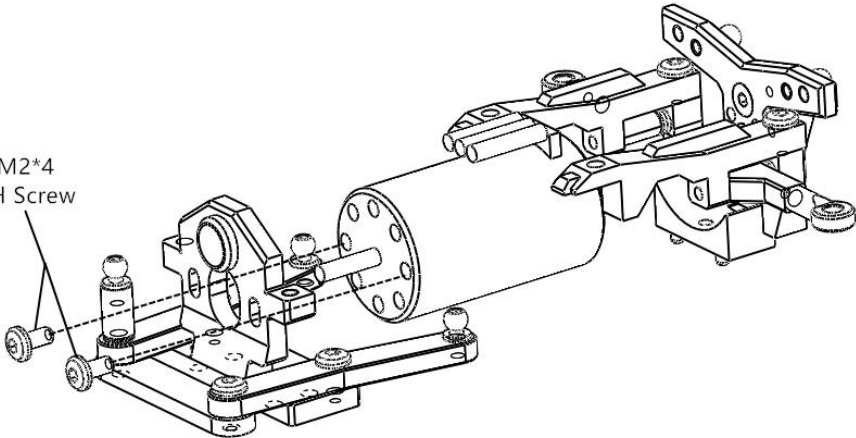



Brushless Motor




Please make sure the steering rack can turn smoothly , if it doesn't you can screw on those two screw lighter .

M2*4
RH Screw





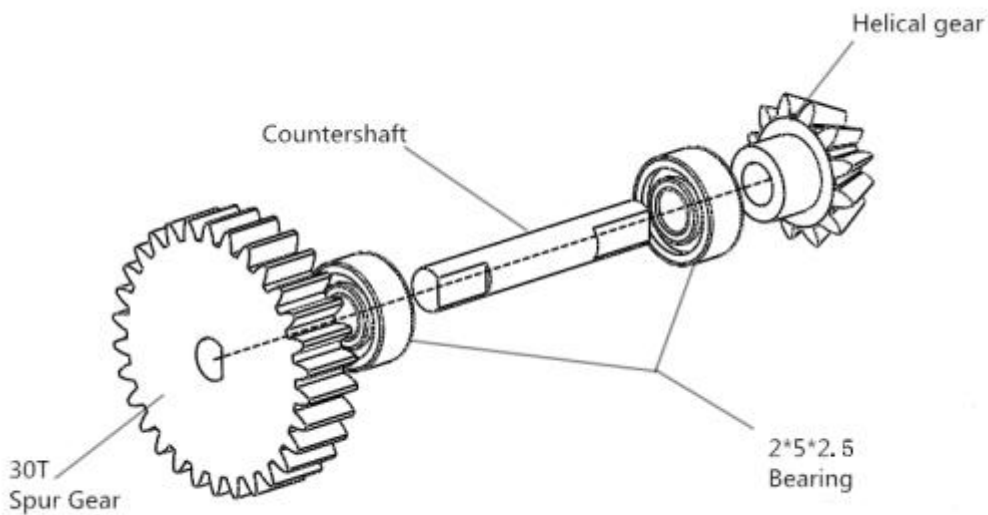
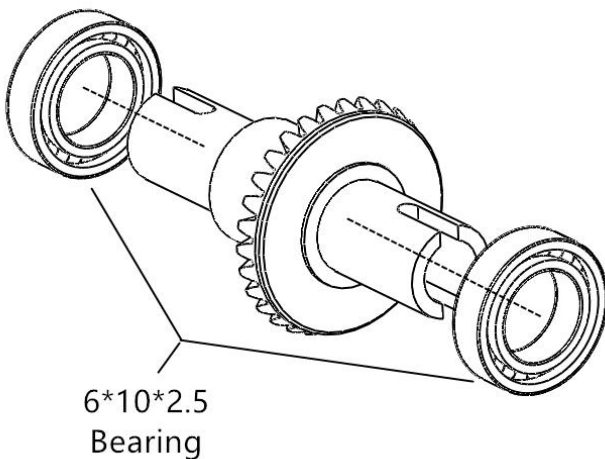
2*5*2.5 Bearing x 2





6*10*2.5 Bearing x 2





Countershaft




 1.5*2.5*0.3 Shims x 6


 Pin Ball Head x 4


 2*5*2.5 Bearing x 1


 M1.6*4 RH Screw x 3

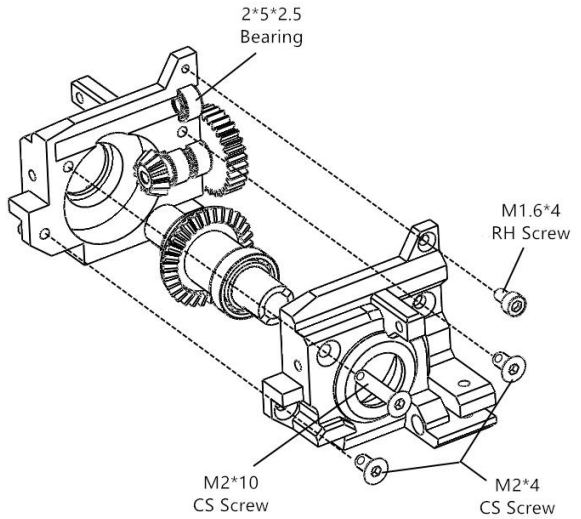
 M2*4 CS Screw x 2

 M2*6 CS Screw x 2

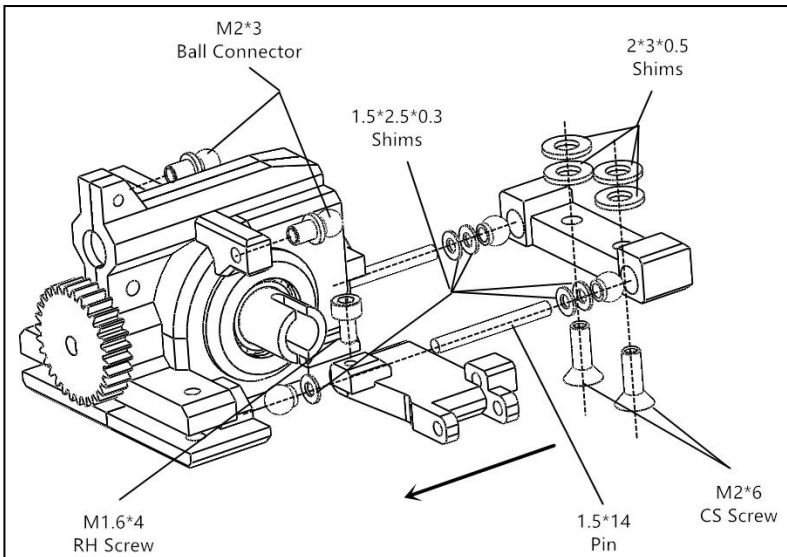
 M2*10 CS Screw x 1

 M2*3 Ball Connector x 2

 1.5*14 Pin x 2



Make sure the gear box runs smoothly , if it doesn't you can use Pen knife or sandpaper , sanding or cutting the bad gap of the gear .



M1.6*8 Set Screw x 2

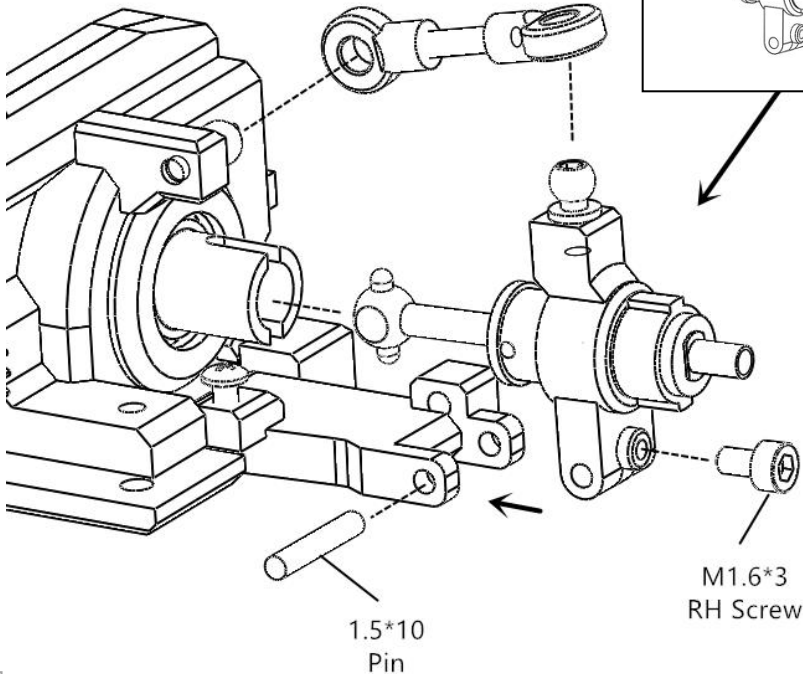
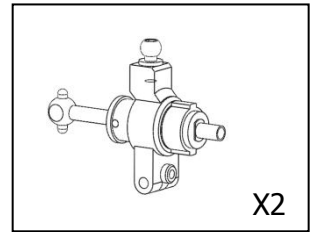
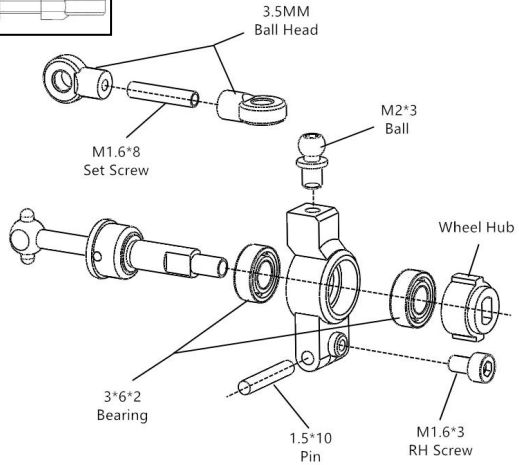
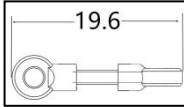
M1.6*3 RH Screw x 2

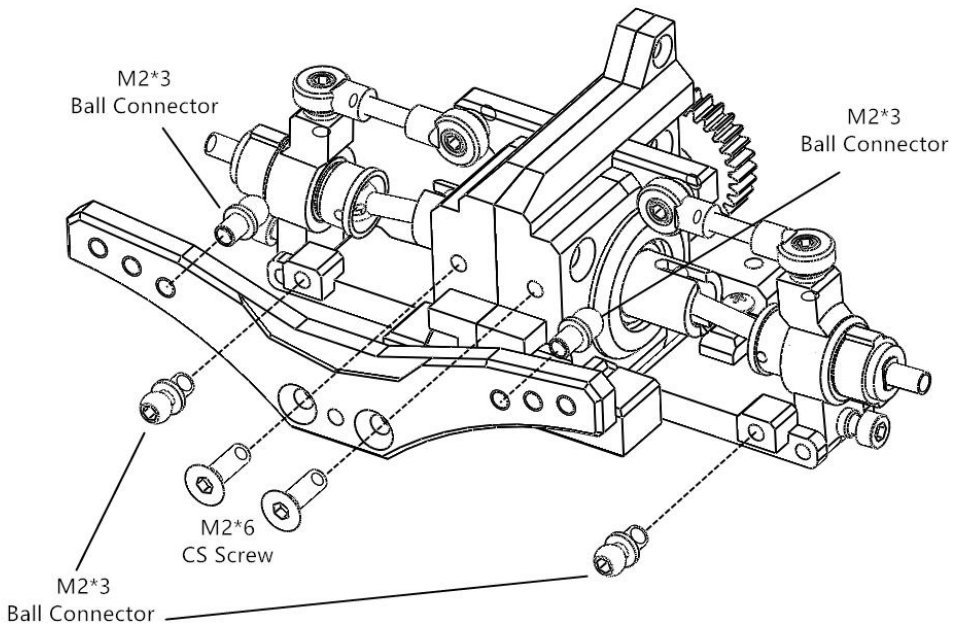
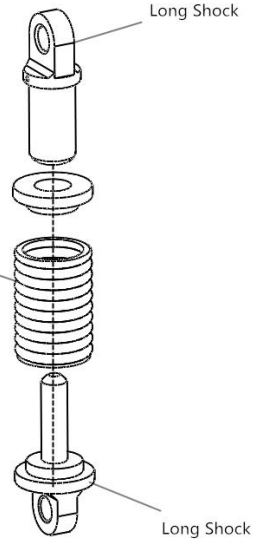
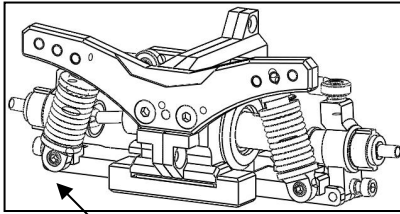
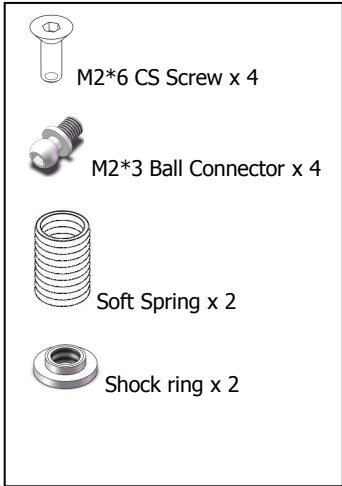
M2*3 Ball Connector x 2

3.5MM Ball Head x 4

3*6*2 Bearing x 4

1.5*10 Pin x 2



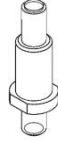




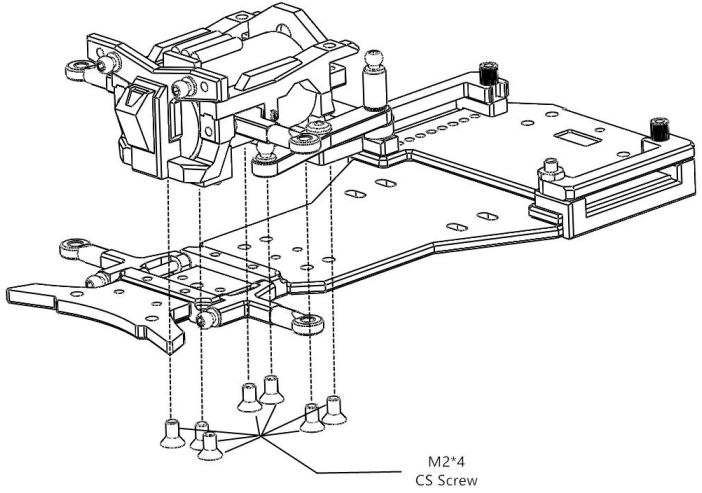
M2*4 CS Screw x 7



M2*3 Ball Connector x 6

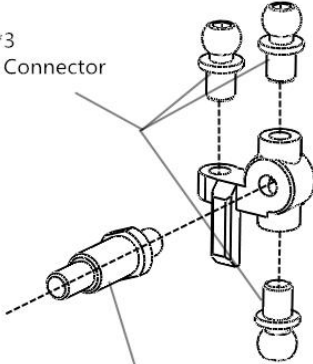


Wheel Axle x 2



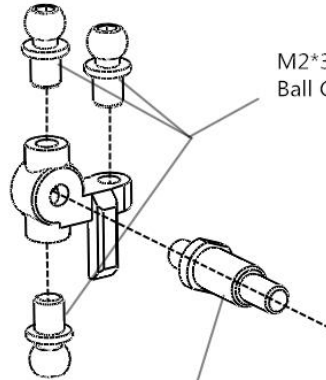
Before install the motor mount on the main chassis ,you should install the center shaft with spur gear(which should install at the page 15) on this step for making sure the gear gap have no issues .

M2*3
Ball Connector



Wheel
Axle

M2*3
Ball Connector



Wheel
Axle



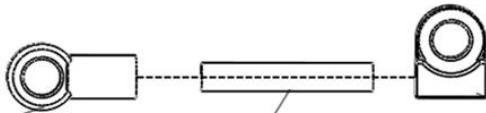
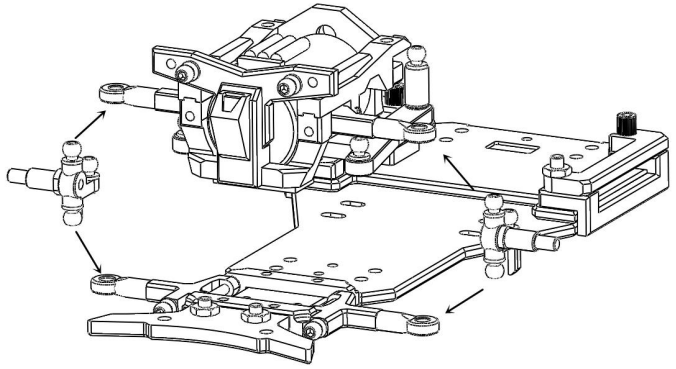
Curved Ball Head x 2



4.5MM Ball Head x 2



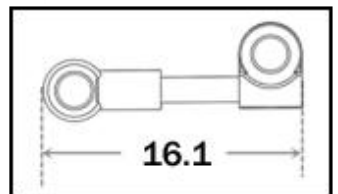
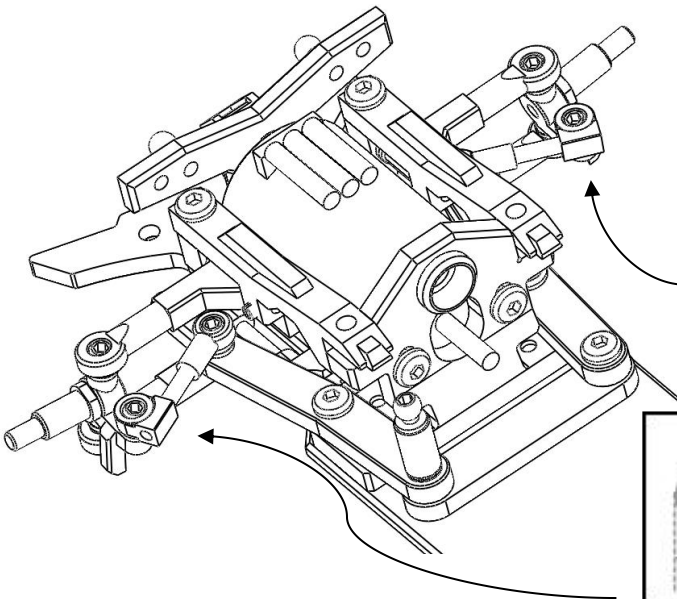
M1.6 x 8 Set Screw x 2



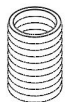
4.5MM
Ball Head

M1.6*8
Set Screw

Curved
Ball Head



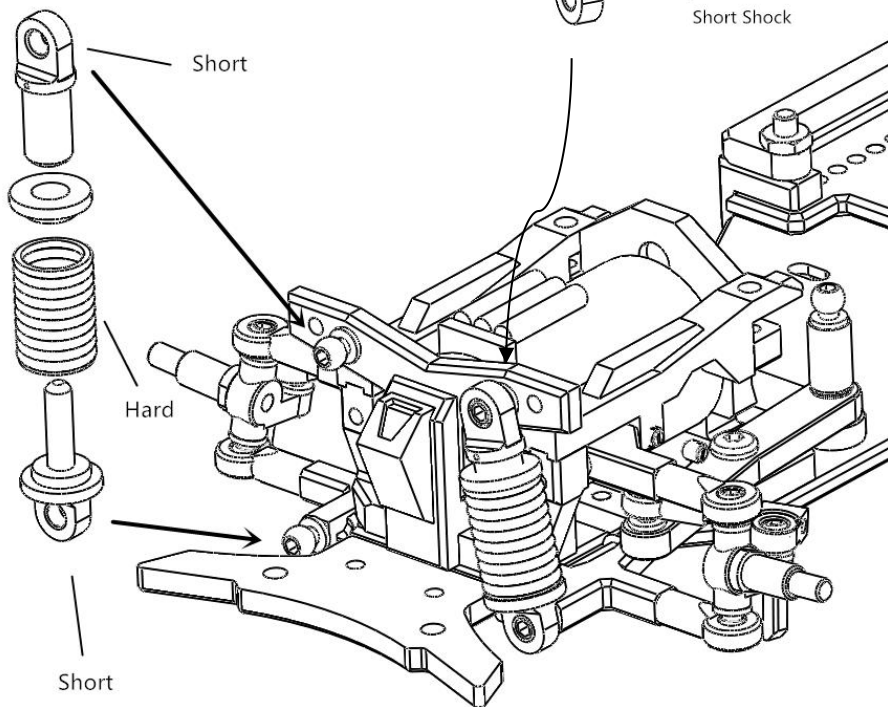
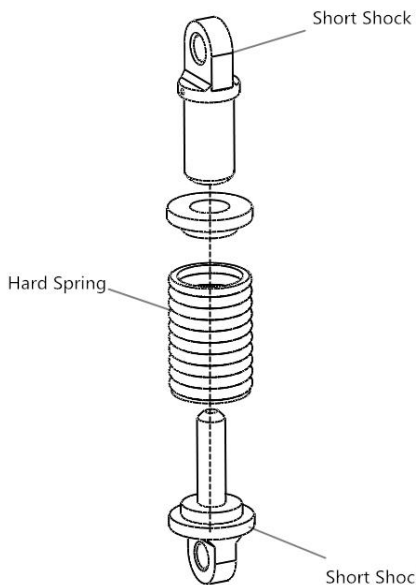
16.1

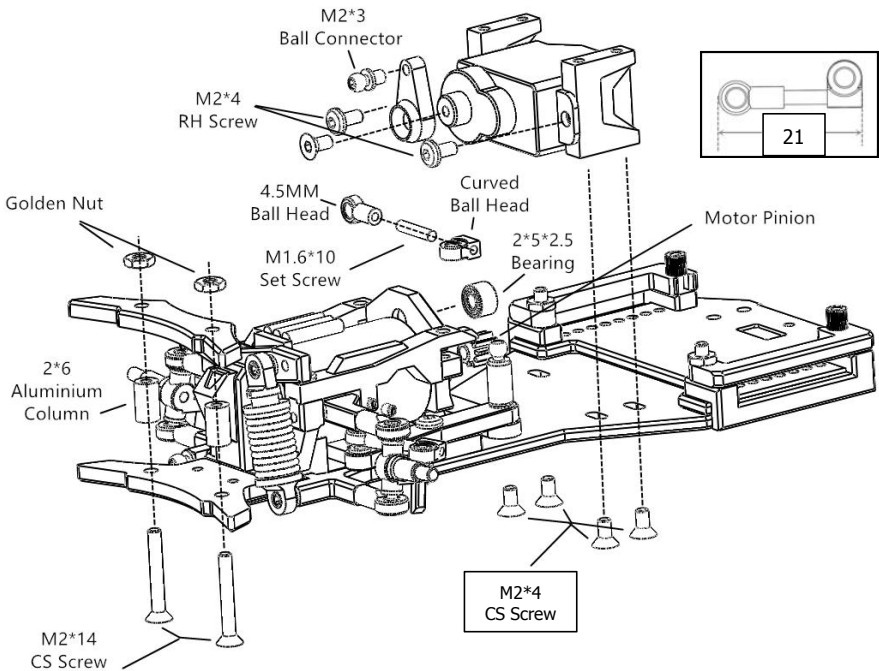
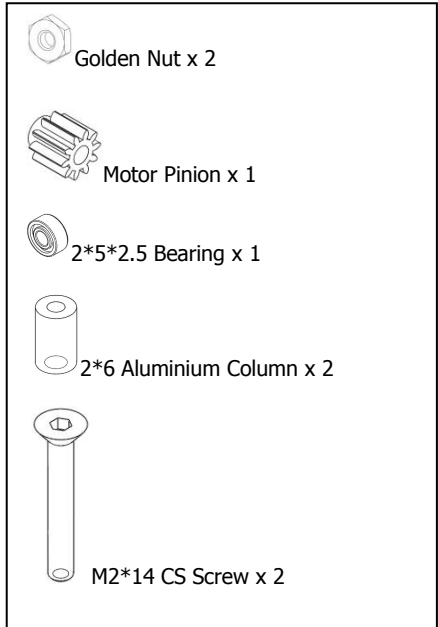
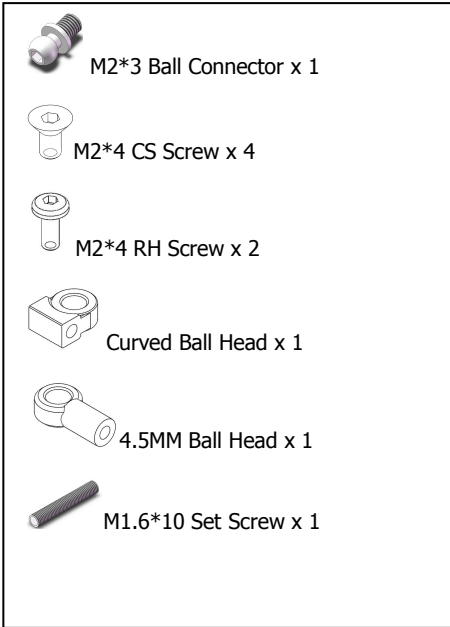


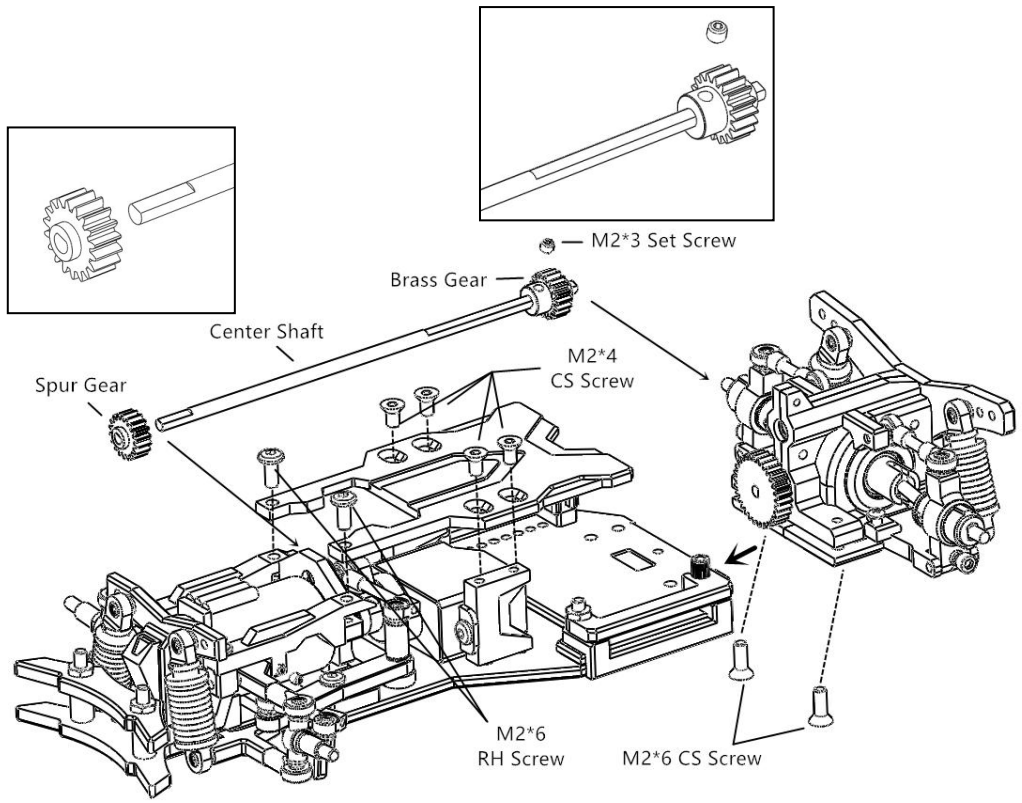
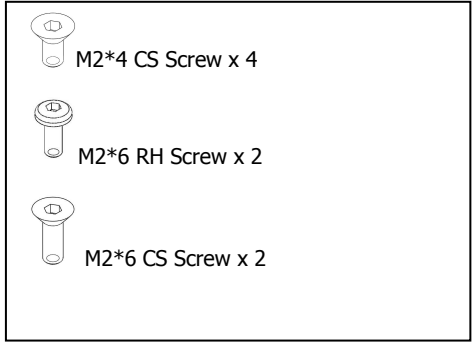
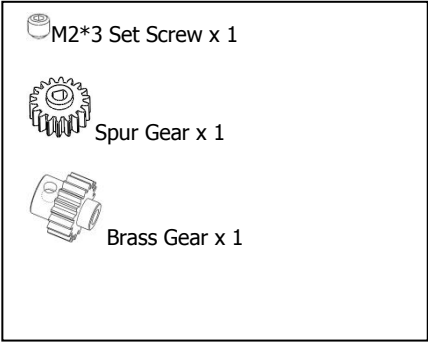
Hard Spring x 2

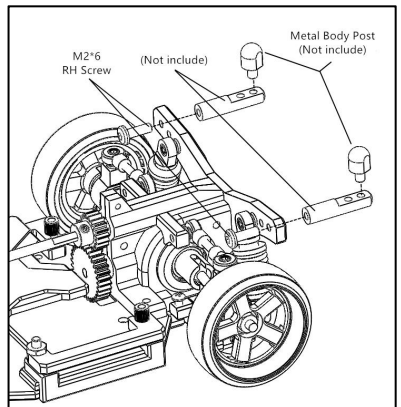
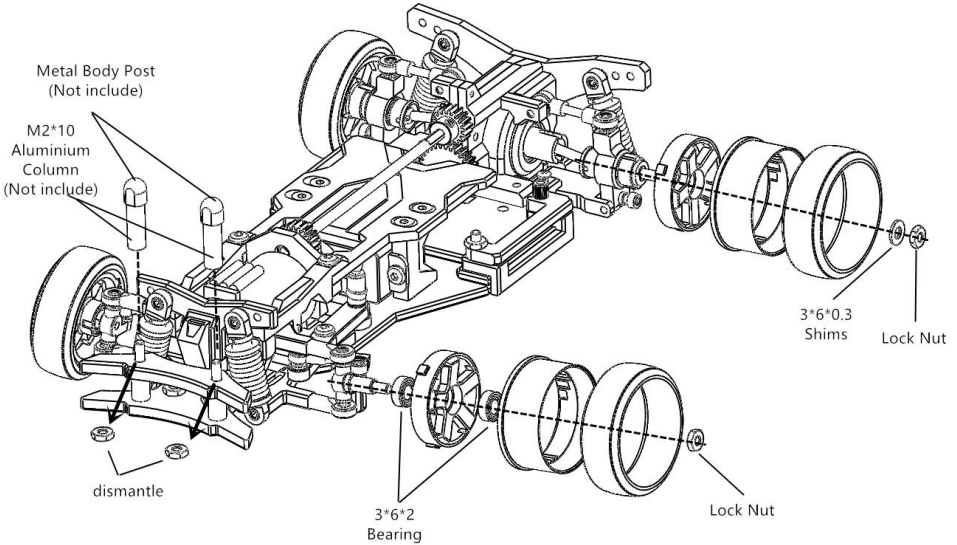
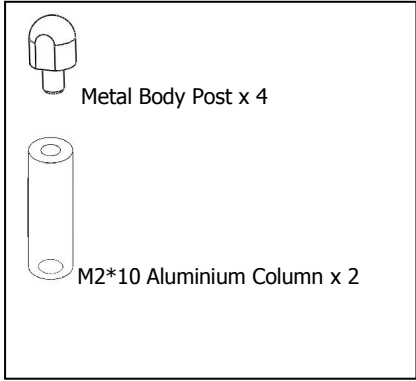
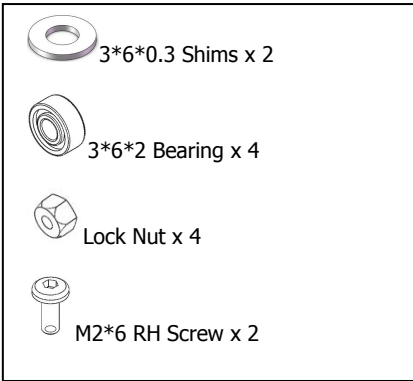


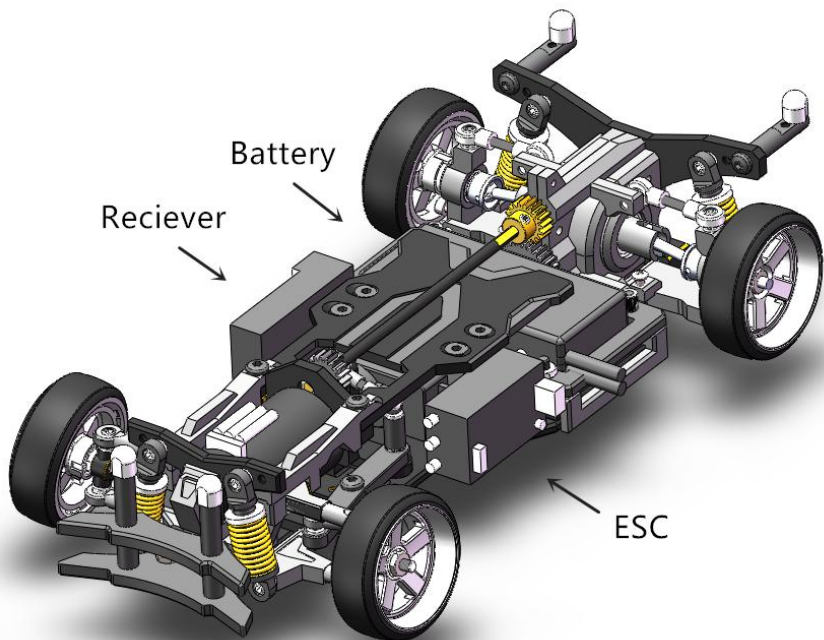
Shock ring x 2













Foshan Building Master Cultural Activities Co. Ltd.

www.bm-rc.com

<https://www.facebook.com/BM.Racing.Model/>

Made in China